



SHORELINE
WHITBY

FESTIVE GUIDE TO WHITBY

I'm dreaming of a Whitby Christmas...



Waves crashing onto the shore, sea air swelling to the clifftops, and little boats returning with the daily catch – life rarely stops for this beautiful fishing town, even at Christmastime.

Spending Christmas or New Year in Whitby is like stepping back in time to a more leisurely life.

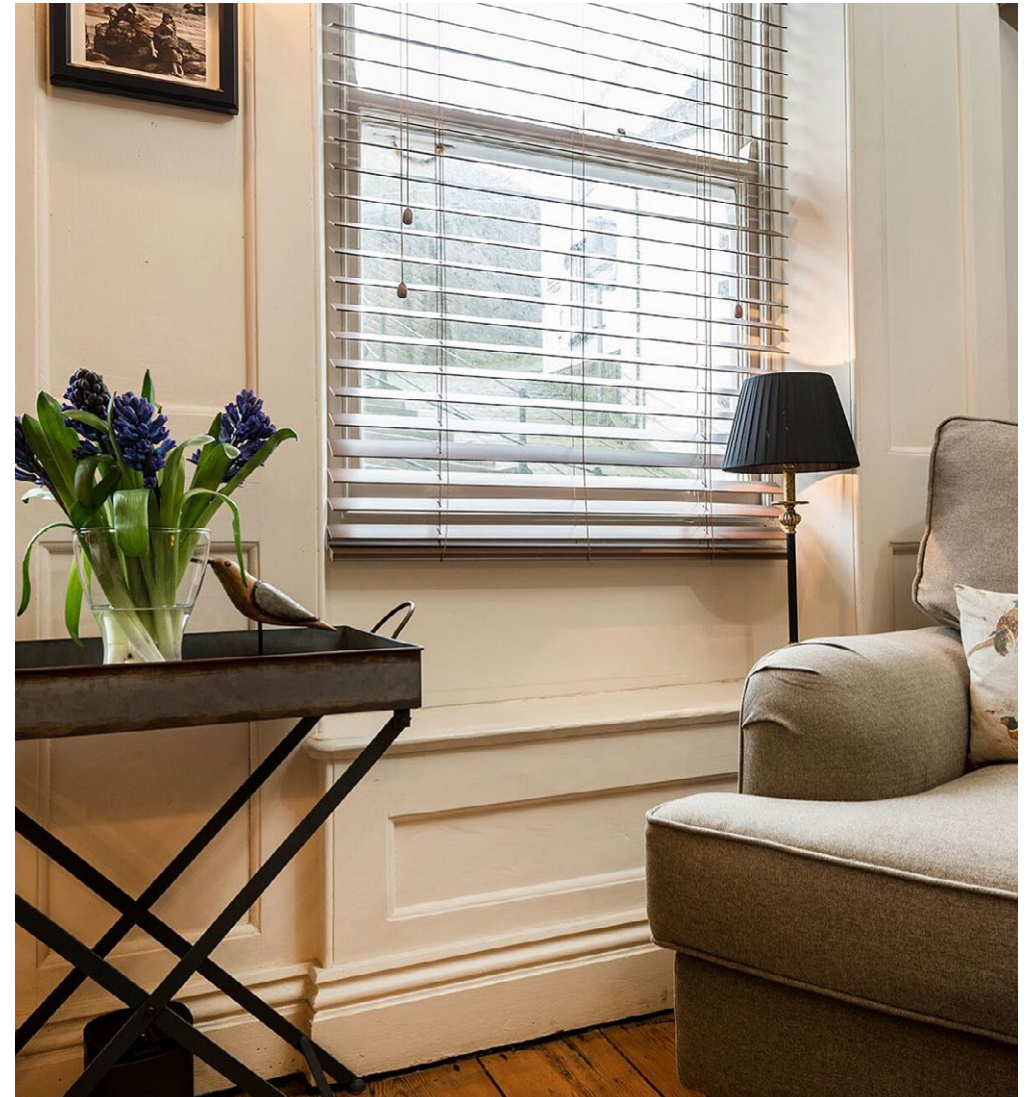
Experience all the usual festive traditions alongside some fantastic local events, long beach walks and warm Yorkshire hospitality.

The best Christmas holiday cottages in Whitby

For a cosy Christmas or lively New Year's party, every Shoreline cottage offers beautiful clean bedding, spotless bathrooms and fluffy towels, free TV viewing and Wi-Fi for streaming Christmas movies or music.

Several Shoreline cottages have steaming hot tubs for bathing in the chill air, or designer kitchens for rustling up party food. If you've no desire to cook, there are many brilliant pubs and restaurants in Whitby ready to serve a Christmas pint or the full festive fayre.

Shoreline includes the extras that make Christmas holidays hassle free: starter fuel for wood-burning stoves, central heating that's on when you arrive and hot water for showers and baths. Should you need us, our local team on the ground is available 365 days of the year.



10 reasons to take a Christmas break with Shoreline

The experienced few know it's wonderful to take a break over Christmas and New Year and Whitby is among the most scenic spots to visit:

1

A break makes the festive season even more fun

2

Celebrate with family and friends in one of our larger homes...

3

... Or escape the relatives at a Whitby hideaway!

4

Parking in Whitby is generally easier in winter, and in some car parks, free

5

Enjoy hot fish and chips in the open air on a crisp winter's day

6

Shoreline provides a decorated Christmas tree in each cottage

7

Join in the Boxing Day Dip in the icy North Sea, brrr!

8

Watch the New Year fireworks on Tate Hill Beach

9

A refreshing beach walk is the perfect hangover cure

10

The house cleaning is left to someone else

Christmas car parking in Whitby and public transport

Whilst Whitby is usually quieter at Christmas, normal car parking charges apply (seven days a week) across the festive season. This includes Bank Holidays unless the car park is a seasonal car park (such as [West Cliff](#) car park). Ticket machines will be covered over when charges don't apply. Search for [Shoreline properties](#) with on-site parking or [pre-book](#) one of our private parking bays in the town.

Central Whitby public car parks include [Church Street](#), [Cliff Street](#), [Endeavour Wharf](#), [Marina Back](#), [Marina Front](#) and [St Hilda's Terrace](#).

Arriva buses operate [several routes](#), so getting around Whitby is easy. The [X93/X94 sightseeing bus](#) connects Whitby to Middlesborough, Guisborough, Whitby, Robin Hood's Bay and Scarborough; check the [seasonal timetable here](#).

Northern Railway operates services from [Whitby train station](#) including routes from Newcastle and Middlesborough, where trains run from all major UK cities. Service updates can be found [here](#).



What's on in Whitby at Christmas



Whitby has a fantastic community spirit. At Christmas and New Year, the town caters for residents and visitors with several annual events. There's plenty to fill your time.

Whitby Ice rink

Close to the Co-op and Whitby Train Station on Langborne Road. The 20 x 12m seasonal ice rink is housed in an all-weather marquee. Open 10.00am-7.00pm, 25th November 2022 - 2nd January 2023 (except Christmas Day). For the full timetable and tickets visit www.whitbyicerink.com

Christmas at Whitby Abbey

The haunting Gothic ruins of Whitby Abbey are open Wednesday to Sunday until 23rd December. Closed for Christmas Eve, Christmas Day and Boxing Day but open 26th December – 1st January.

Whitby Uptide Fishing Trips

Whilst many boat trip operators end their excursions after summer, keen anglers can take a stunning winter outing with Whitby Fishing Trips during a Christmas or New year stay. Operating except in rough seas, the uptide fishing trip (for cod) is done under anchor in Whitby's inshore waters, using light tackle.

Boxing Day Events

Will you dare to bare yourself to the North Sea for the annual Boxing Day Dip? This annual charity event is brought to you by Whitby & District Lions Club. Fancy dress is optional and if you don't fancy throwing yourself in, you can watch the spectacle from the comfort of Whitby Pier.

What's on in Whitby at Christmas

Scarborough is less than 20 miles from Whitby (half hour by car) and Boxing Day sees the Fishermen and Firemen's Football Match on the town's South Bay Beach. An annual event since 1893, the match raises funds for the Fisherman and Firemen Charity.

Scarborough also hosts the charity Mile of Pennies – the laying of coins begins on the kerb from Scarborough Lifeboat House, along the seafront.

For many years the Sub Aqua Club has organised a crazy Boxing Day Raft Race in Scarborough harbour. Teams race their self-built rafts around a course and traditionally spectators pelt them with eggs and flour in a bid to put them off.

Guided Walks at Christmas

Guided walks of Dracula's Whitby, the moors, or a ghostly lantern-lit tour of Robin Hood's Bay can be joined in or booked privately throughout December with the Whitby Storyteller. Or meet up with Dr Crank as he takes groups on a 75-minute Whitby walk to discover strange tales of murder, mystery and suspense.

North York Moors Railway Santa Special

From 3-24 December the North Yorkshire Moors Railway runs its Santa Special from Grosmont station (8 miles from Whitby) and Pickering train station (20 miles). This is a brilliant event for families which lasts around an hour. The Santa Express includes a visit and games with Santa and his elves.

Christmas Church Services in Whitby

The Parish of Whitby with Ruswarp has three Christian churches in Whitby town: St Hilda's at West Cliffe, St John's on Brunswick Street, and St Mary's high up on the Abbey Plain near Whitby Abbey and which hosts an annual 100+ Christmas tree festival. Please check for advent and carol services.

Last-Minute Gifts

Shoreline gift vouchers are a great idea. Call us on 01947 668 888 to buy. All our vouchers are valid for 12 months from the date of issue and can be used to book breaks throughout the year at any Shoreline cottage.

We also like the Botham's of Whitby food hampers that can be ordered online and delivered by Royal Mail or collected from the shop on your arrival in Whitby.

Eating out in Whitby



Restaurants in Whitby get booked up at Christmas and New Year, so we recommend calling ahead to reserve a table. Here are just some of the most popular restaurants, pubs and fish and chip shops in Whitby.

Restaurants

[The Orlop Bar and Grill](#) onboard the HM Bark Endeavour, moored at Whitby Harbour

[Abbey Wharf](#) chargrill and seafood restaurant Skinner Street, Whitby (dog-friendly)

[Estbeck House](#) seafood restaurant, East Row, Sandsend

[Harry's Lounge Bar & Brasserie](#), Pier Road, Whitby

[Moutreys Italian](#), Grape Lane, Whitby

[Rusty Shears](#) teasshop, Silver Street, Whitby

[The Marine Hotel](#) seafood, Marine Parade, Whitby

[The Moon and Sixpence](#) modern British, harbourside, Whitby

[Albert's Eatery](#) Seafood, Church St, Whitby (dog-friendly)

[Ditto](#) modern British, Skinner Street, Whitby

[Met Lounge and Ballroom](#), Argyle Road, Whitby (dog friendly)

[Sanders Yard Bistro](#) Sanders Yard, Church St, Whitby (dog-friendly)

Eating out in Whitby

Pubs

[The White Horse & Griffin, Church Street, Whitby](#)

[The Badger Hounds, Hinderwell, Saltburn-by-the-Sea](#)

[The Dolphin pub, Bridge Street, Whitby](#)

[The Fylingdales, Thorpe Lane, Fylingthorpe \(dog friendly\)](#)

[The Black Horse Inn, Church Street, Whitby \(dog friendly\)](#)

[The Granby, Skinner Street, Whitby \(dog friendly\)](#)

[The Hart Inn, Sandsend \(dog friendly\)](#)

[The Pier Inn, Pier Road, Whitby \(dog friendly\)](#)

[The Little Angel, Flowergate, Whitby \(dog friendly\)](#)

[The Windmill Inn, Stainsacre Lane, Whitby \(dog friendly\)](#)

[The Middle Earth Tavern, Church Street, Whitby \(dog friendly\)](#)

[The Plough Inn, Coach Road, Sleights \(dog friendly\)](#)

[The Endeavour Pub, Church Street, Whitby \(dog friendly\)](#)



Eating out in Whitby



Fish & Chips

Hadleys fish and chips, Bridge Street, Whitby (dog-friendly)

Fish Box Langborne Road, Whitby

Fish Box, Bay Bank Robin Hood's Bay

Quayside, Pier Road, Whitby

Royal Fisheries, Baxtergate, Whitby

Magpie Cafe, Pier Road, Whitby

Mister Chips, Church Street, Whitby

Papa's, Baxtergate, Whitby

Silver Street Fisheries, Whitby

The Fisherman's Wife, Khyber Pass, Whitby

Trenchers, New Quay Road, Whitby



Shoreline Christmas and New Year Opening Times

Call us on 01947 668 888

Our phone line is open Monday to Friday 10am-6pm. It is closed Christmas Day, Boxing Day and New Year's Day but we check our answering service regularly so if you need us, please leave a message and we will call you back as soon as possible.

Our team in Whitby is always close by to help you with any emergencies that arise, even on Christmas Day.

www.shoreline-cottages.com